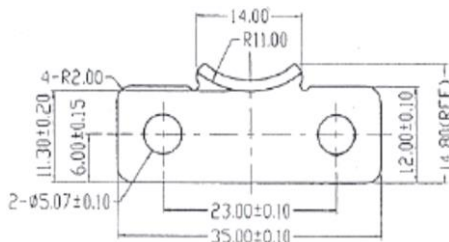
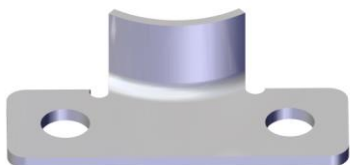


# 立興(楊氏)有限公司

## LIP HING (YEUNG'S) COMPANY LIMITED

### 聯動執手(上下拉手)鋼扣 DUAL LOCK KEEPER

#### KAS-1



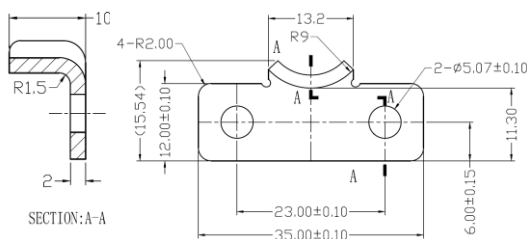
#### 特徵

物料: 304不鏽鋼  
高度: 10mm  
料厚: 1.0mm

#### Features

Material: SUS304  
Height: 10mm  
Material thickness: 1.0mm

#### KAS-1-T2



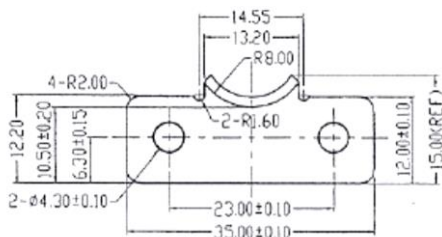
#### 特徵

物料: 304不鏽鋼  
高度: 10mm  
料厚: 2.0mm

#### Features

Material: SUS304  
Height: 10mm  
Material thickness: 2.0mm

#### KCH-2



#### 特徵

物料: 304不鏽鋼  
高度: 9mm  
料厚: 1.0mm

#### Features

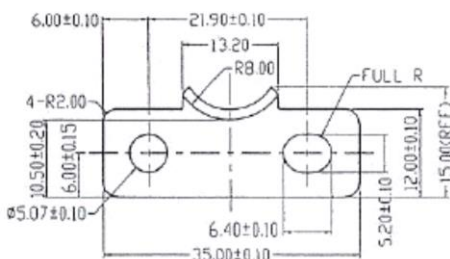
Material: SUS304  
Height: 9mm  
Material thickness: 1.0mm

# 立興(楊氏)有限公司

## LIP HING (YEUNG'S) COMPANY LIMITED

### 聯動執手(上下拉手)鋼扣 DUAL LOCK KEEPER

#### KLT-3



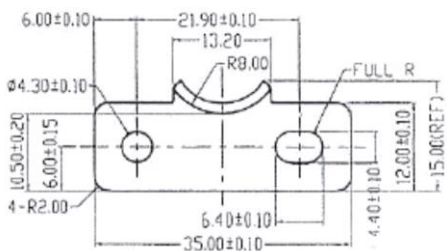
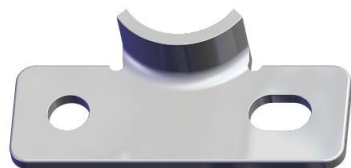
#### 特徵

物料: 304不鏽鋼  
高度: 8mm  
料厚: 1.0mm

#### Features

Material: SUS304  
Height: 8mm  
Material thickness: 1.0mm

#### KMK-4



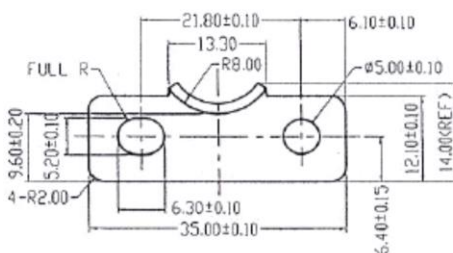
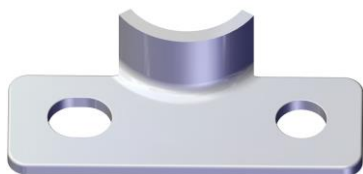
#### 特徵

物料: 304不鏽鋼  
高度: 8mm  
料厚: 1.0mm

#### Features

Material: SUS304  
Height: 8mm  
Material thickness: 1.0mm

#### KPY-5



#### 特徵

物料: 304不鏽鋼  
高度: 9mm  
料厚: 1.0mm

#### Features

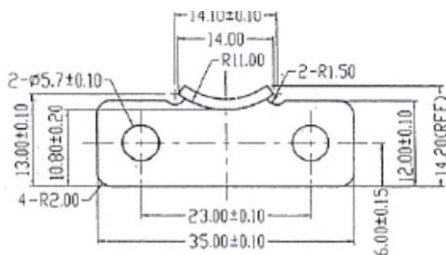
Material: SUS304  
Height: 9mm  
Material thickness: 1.0mm

# 立興(楊氏)有限公司

## LIP HING (YEUNG'S) COMPANY LIMITED

### 聯動執手(上下拉手)鋼扣 DUAL LOCK KEEPER

KAC-6



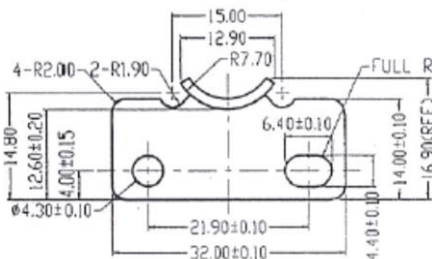
#### 特徵

物料: 304不鏽鋼  
高度: 10.5mm  
料厚: 1.0mm

#### Features

Material: SUS304  
Height: 10.5mm  
Material thickness: 1.0mm

KLU-7



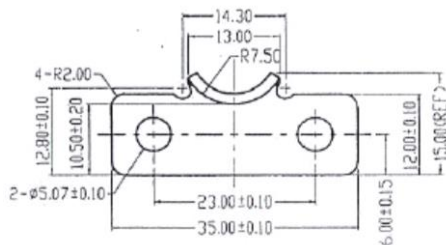
#### 特徵

物料: 304不鏽鋼  
高度: 8mm  
料厚: 1.0mm

#### Features

Material: SUS304  
Height: 8mm  
Material thickness: 1.0mm

KYH-8



#### 特徵

物料: 304不鏽鋼  
高度: 9mm  
料厚: 1.0mm

#### Features

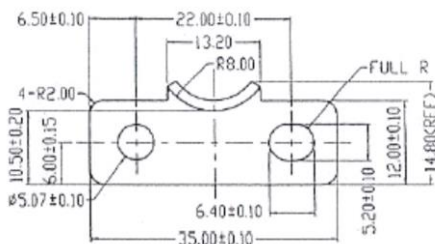
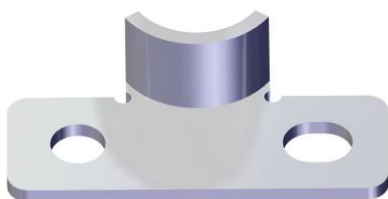
Material: SUS304  
Height: 9mm  
Material thickness: 1.0mm

# 立興(楊氏)有限公司

## LIP HING (YEUNG'S) COMPANY LIMITED

### 聯動執手(上下拉手)鋼扣 DUAL LOCK KEEPER

KFA-9



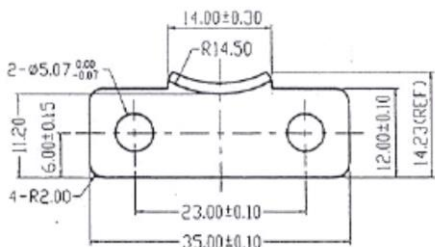
#### 特徵

物料: 304不鏽鋼  
高度: 9.8mm  
料厚: 1.0mm

#### Features

Material: SUS304  
Height: 9.8mm  
Material thickness: 1.0mm

KGE-10



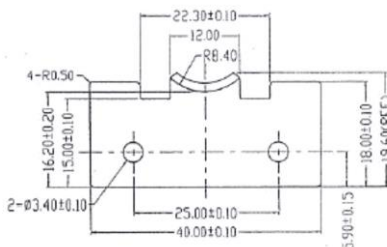
#### 特徵

物料: 304不鏽鋼  
高度: 9mm  
料厚: 1.0mm

#### Features

Material: SUS304  
Height: 9mm  
Material thickness: 1.0mm

KYK8041



#### 特徵

物料: 304不鏽鋼  
高度: 7.5mm  
料厚: 1.0mm

#### Features

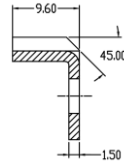
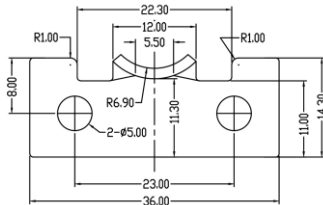
Material: SUS304  
Height: 7.5mm  
Material thickness: 1.0mm

# 立興(楊氏)有限公司

## LIP HING (YEUNG'S) COMPANY LIMITED

### 聯動執手(上下拉手)鋼扣 DUAL LOCK KEEPER

KLO-11-9.6



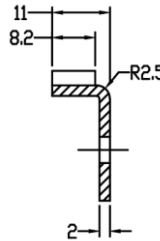
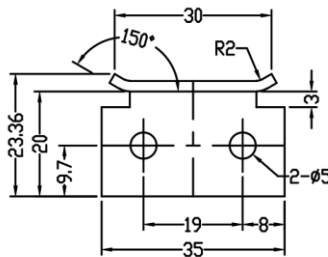
#### 特徵

物料: 304不鏽鋼  
高度: 9.6mm  
料厚: 1.5mm

#### Features

Material: SUS304  
Height: 9.6mm  
Material thickness: 1.5mm

KFE



#### 特徵

物料: 304不鏽鋼  
高度: 11mm  
料厚: 2.0mm

#### Features

Material: SUS304  
Height: 11mm  
Material thickness: 2.0mm